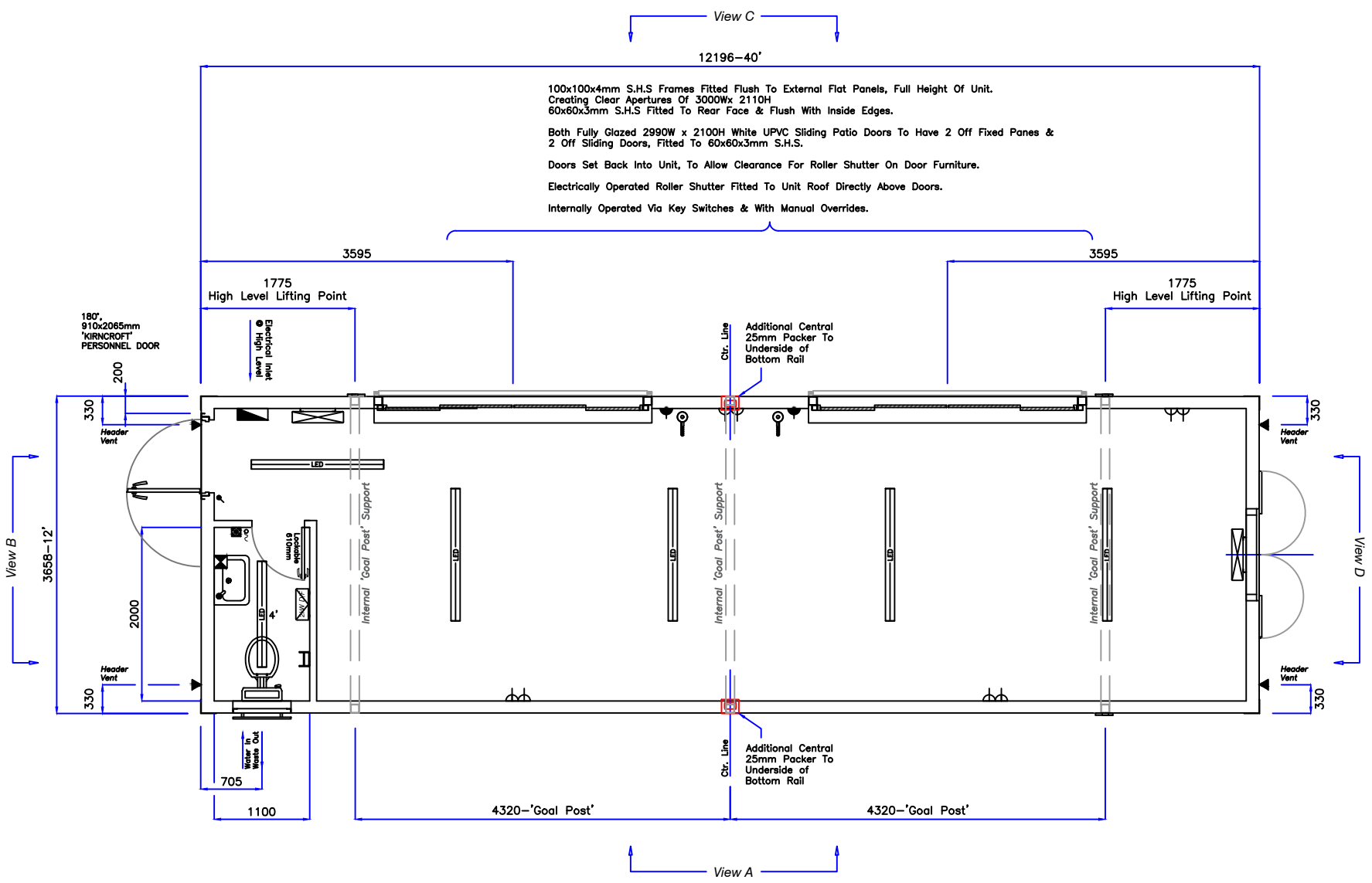


FLAT SIDED CONSTRUCTION



100x100x4mm S.H.S Frames Fitted Flush To External Flat Panels, Full Height Of Unit.
 Creating Clear Apertures Of 3000Wx 2110H
 60x60x3mm S.H.S Fitted To Rear Face & Flush With Inside Edges.
 Both Fully Glazed 2990W x 2100H White UPVC Sliding Patio Doors To Have 2 Off Fixed Panes &
 2 Off Sliding Doors, Fitted To 60x60x3mm S.H.S.
 Doors Set Back Into Unit, To Allow Clearance For Roller Shutter On Door Furniture.
 Electrically Operated Roller Shutter Fitted To Unit Roof Directly Above Doors.
 Internally Operated Via Key Switches & With Manual Overrides.

Legend	
	Consumer Unit
	Light Switch
	Light Pull Switch
	4' & 5' LED Vapour Proof Light
	2kW Downflow Heater Ref. No. 704860
	Heater Wireless Controller SLPG Ref. No. 704849
	2kW Convector Heater
	Dbl. Skt. @300mm F.F.L
	Sgl. Fused Spur @200mm F.F.L
	Roller Shutter Key Switch @1200 F.F.L
	3kW, Oversink, Instant Water Heater
	Header Vent

UNIT NON STANDARD HEIGHT: 2552mm.
 BOTTOM RAIL SIZE: 150x75x17Kg/m P.F.C
 TOP RAIL SIZE: 100x50x10.42Kg/m P.F.C
 BEARER SIZE: 75x50x3mm R.H.S. @ 305mm Ctrs
 ROOF SUPPORTS: 5 OFF 50x50x3mm S.H.S
 'GOAL POST' INTERNAL SUPPORTS: 60x60x4mm S.H.S
 SIDE PANEL HEIGHT: 2260mm
 ADDITIONAL CENTRAL 25mm PACKERS REQUIRED
 DIRECTLY BELOW BOTTOM RAILS.
 HIGH LEVEL LIFTING POINTS WELDED WITHIN TOP RAILS.
 SEE M0054.
 915x915mm 'ALI' FRAMED, DOUBLE GLAZED,
 SLIDING WINDOW c/w KIRNCROFT SHUTTER.
 562x254mm 'ALI' FRAMED, HIGH LEVEL,
 FOV WINDOW c/w OBSCURE GLASS & STEEL,
 MESH GUARD.
 100x100x4mm S.H.S FRAMES FITTED FLUSH TO
 EXTERNAL FLAT PANELS, FULL HEIGHT OF UNIT.
 CREATING CLEAR APERTURES OF 1810Wx 2110H
 60x60x3mm S.H.S FITTED TO REAR FACE & FLUSH
 WITH INSIDE EDGES.
 FULLY GLAZED, 2990W x 2100H WHITE UPVC,
 PATIO DOORS TO HAVE 2 OFF FIXED PANES &
 2 OFF SLIDING DOORS,
 FITTED TO 60x60x3mm S.H.S.
 DOORS SET BACK INTO UNIT, TO ALLOW CLEARANCE
 FOR ROLLER SHUTTER ON DOOR FURNITURE.
 ELECTRICALLY OPERATED ROLLER SHUTTER FITTED
 TO UNIT ROOF DIRECTLY ABOVE DOORS.
 INTERNALLY OPERATED VIA KEY SWITCHES INCLUDING
 MANUAL OVERRIDES.
 INTERNAL CEILING HEIGHT: 2150mm(STANDARD).

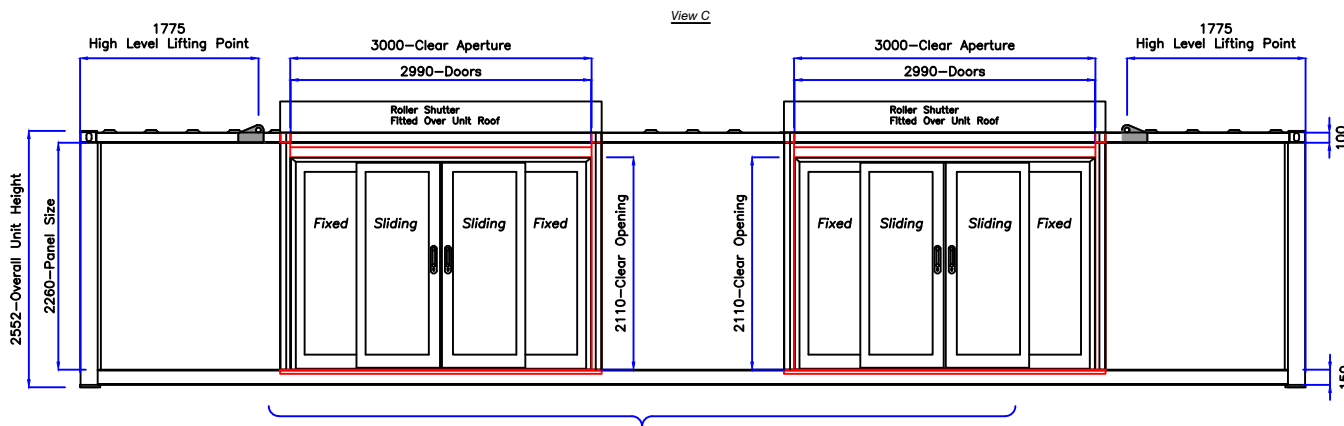
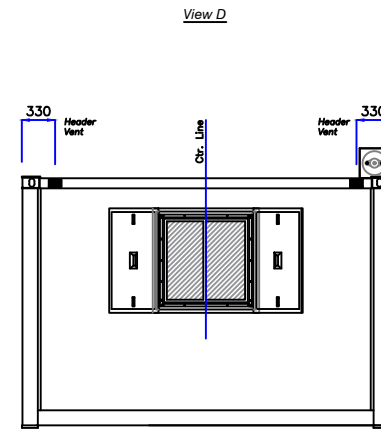
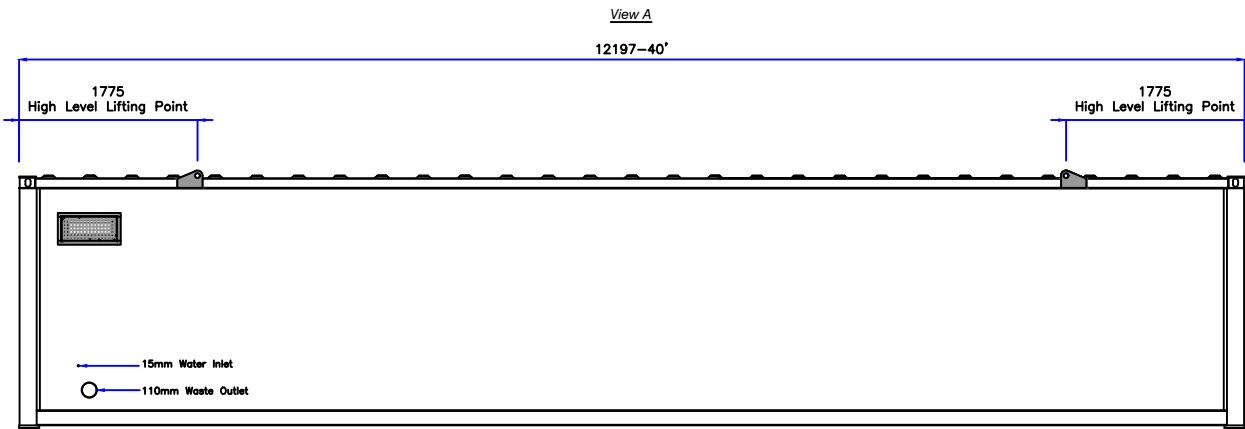
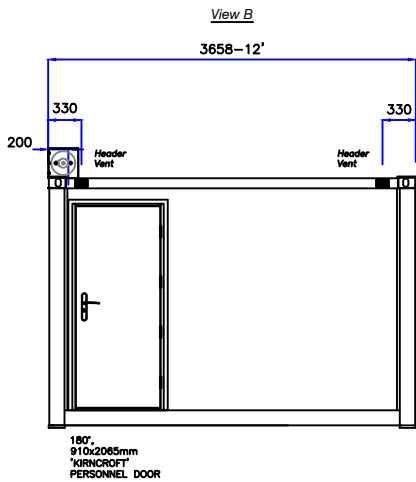
Lining Details			
WALLS	VINYL FACED, GREY SPECKLED PLYWOOD & 50mm INSULATION		
CEILING	MONO WHITE & 50mm INSULATION		
TRIMS	WHITE PLASTIC		
FLOOR	SLIP RESISTANT VINYL FLOORING OVER 18mm TIMBER		
FLATSIDED		<input checked="" type="checkbox"/>	
Rev.	B	Date	11/06/20 Amended By: JT
Amendment Details	Sliding UPVC Door Sizes Increased		
Drawn	JT	Date	08/06/20

Title.
 Mac Containers
 12196 L x 3658 W x 2552 H, Players Room



Dwg. No.
 MAC_CH4012N05B
 Tab 1 Of 2 - Plan
 Do Not Scale

FLAT SIDED CONSTRUCTION



100x100x4mm S.H.S Frames Fitted Flush To External Flat Panels, Full Height Of Unit.
 Creating Clear Apertures Of 3000Wx 2110H
 60x60x3mm S.H.S Fitted To Rear Face & Flush With Inside Edges.

Both Fully Glazed 2990W x 2100H White UPVC Sliding Patio Doors To Have 2 Off Fixed Panes & 2 Off Sliding Doors, Fitted To 60x60x3mm S.H.S.

Doors Set Back Into Unit, To Allow Clearance For Roller Shutter On Door Furniture.

Electrically Operated Roller Shutter Fitted To Unit Roof Directly Above Doors.

Internally Operated Via Key Switches & With Manual Overrides.

FLATSIDED		✓	
Rev.	B	Date	11/06/20 Amended By: JT
Amendment Details	Sliding UPVC Door Sizes Increased		
Drawn	JT	Date	08/06/20

Title.
 Mac Containers
 12196 L x 3658 W x 2552 H, Players Room



Dwg. No.
 MAC_CH4012N01B
 Tab 2 Of 2 - Elevations
 Do Not Scale